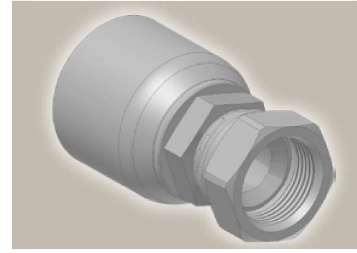
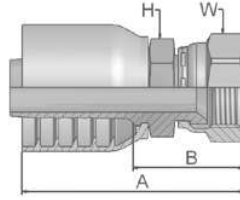


06 Female JIC 37° – Swivel Straight

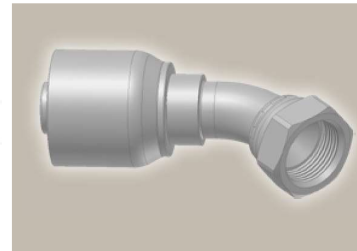
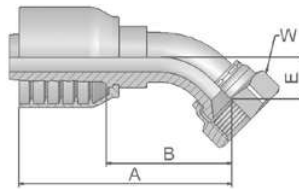
ISO12151-5-SWS – DKJ



Part Number	Hose I.D.				Thread UNF	A mm	B mm	H		W	
	DN	Inch	Size	mm				mm	Inch	mm	Inch
10673-12-12-SM	19	3/4	-12	19.1	1 1/16x12	93	45	30	32		
10673-16-12	19	3/4	-12	19.1	1 5/16x12	99	51	36	41		
10673-16-16-SM	25	1	-16	25.4	1 5/16x12	103	52	36	41		
10673-20-16	25	1	-16	25.4	1 5/16x12	109	59	41	50		
10673-16-20-SM	31	1 1/4	-20	31.8	1 5/16x12	116	52	46	41		
10673-20-20-SM	31	1 1/4	-20	31.8	1 5/8x12	125	61	46	50		
10673-24-20-SM	31	1 1/4	-20	31.8	1 7/8x12	130	66	50	60		
10673-24-24-SM	38	1 1/2	-24	38.1	1 7/8x12	128	66	50	60		
10673-32-24-SM	38	1 1/2	-24	38.1	2 1/2x12	138	76	65	75		
10673-32-32-SM	51	2	-32	50.8	2 1/2x12	150	79	65	75		

37 Female JIC 37° – Swivel 45° Elbow

ISO 12151-5-SWE 45° – DKJ 45°



Part Number	Hose I.D.				Thread UNF	A mm	B mm	E mm	W	
	DN	Inch	Size	mm					mm	mm
13773-12-12-SM	19	3/4	-12	19.1	1 1/16x12	104	56	22	32	
13773-16-12-SM	19	3/4	-12	19.1	1 5/16x12	107	59	24	41	
13773-16-16-SM	25	1	-16	25.4	1 5/16x12	119	69	24	41	
13773-20-16-SM	25	1	-16	25.4	1 5/8x12	143	92	47	55	
13773-20-20-SM	31	1 1/4	-20	31.8	1 5/8x12	171	107	47	50	
13773-24-20-SM	31	1 1/4	-20	31.8	1 7/8x12	172	108	48	60	
13773-24-24-SM	38	1 1/2	-24	38.1	1 7/8x12	194	132	58	60	
13773-32-24-SM	38	1 1/2	-24	38.1	2 1/2x12	208	145	72	75	
13773-32-32-SM	51	2	-32	50.8	2 1/2x12	251	179	72	75	

Approved **fitting series** for hose types:

73 731 731TC SX35 SX35LT SX35TC SX42 SX42LT SX42TC